

QUICK CARD

Exporting System Information and Option Inventory to a USB Flash Drive.

This quick card explains how to copy a text file containing System Information and Test Options status (active / not active) for the platform and the 400G Module from the OneAdvisor to a USB flash drive.

COPY SYSTEM INFORMATION TO .LOG FILE





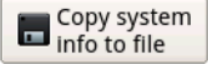

1. Press the Power button  on the top of the OneAdvisor to start the test instrument.
2. Insert the USB Flash Drive into a USB port on top of the platform.
3. Tap the **Home** icon  in top left corner of the screen.
4. Tap the **System** icon  on the left side of the screen.
5. Tap the **System Info** icon. 
System Info
6. Tap the **Copy system info to file** button at the bottom of the screen  to create a .log text file containing system information.
7. Note the filename and tap **OK** to dismiss the popup message.
8. Tap the **System** icon  at the top of the screen to return to the top-level System menu.



Figure 1: OneAdvisor ONA-1000

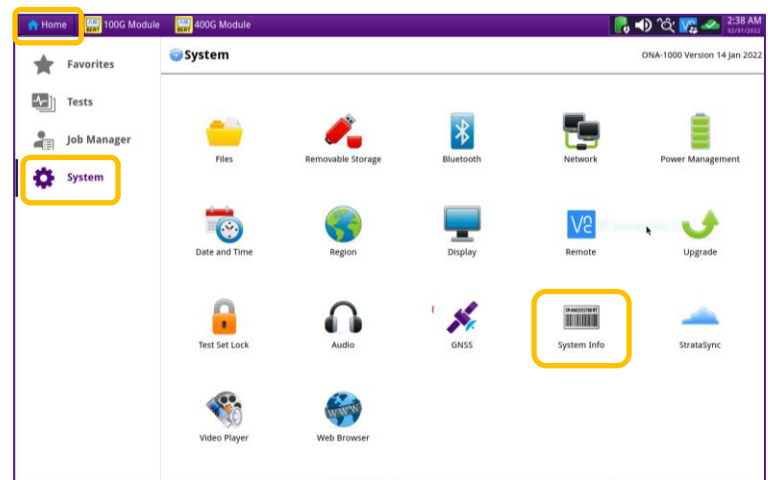


Figure 2: Home Screen

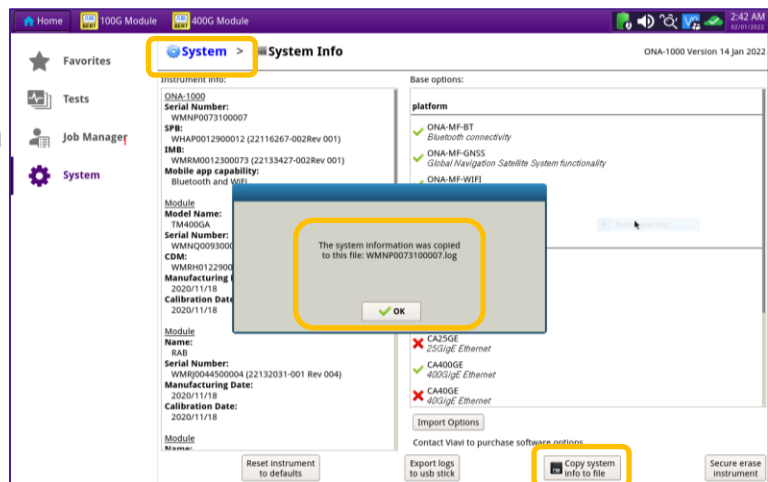


Figure 3: System Information Screen

QUICK CARD

COPY .LOG FILE TO USB FLASH DRIVE

1. Tap the **Files** icon  to display the File Explorer.

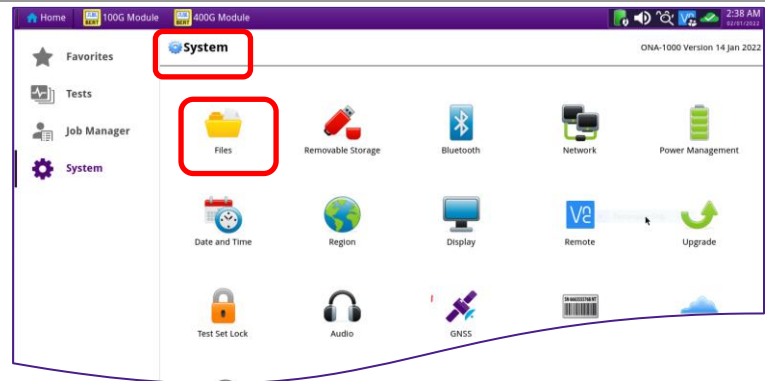
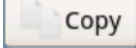


Figure 4: System Menu

2. Tap and select the filename of the System Information log file.

3. Tap the Copy button. 

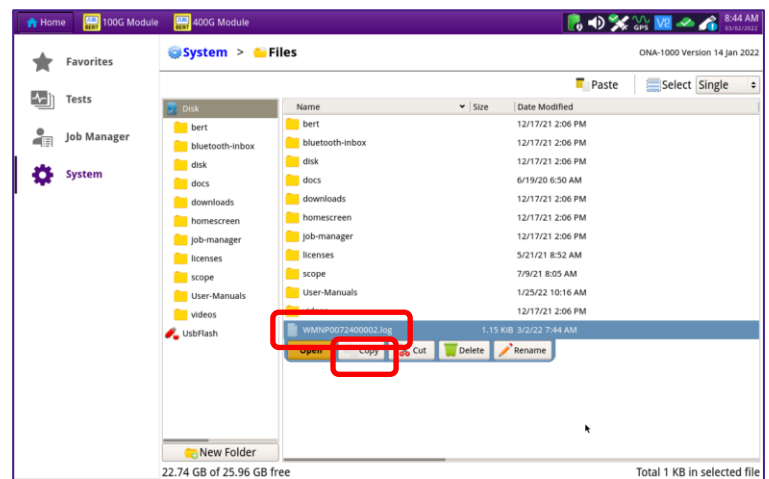





Figure 5: File Explorer

4. On the left side of the screen, tap on the USB Flash drive icon  USB_FLASH to select the drive.
5. Tap the **Paste** icon  Paste at the top of the file explorer.
6. Tap the **System** icon  **System** at the top of the screen to return to the top-level System menu.

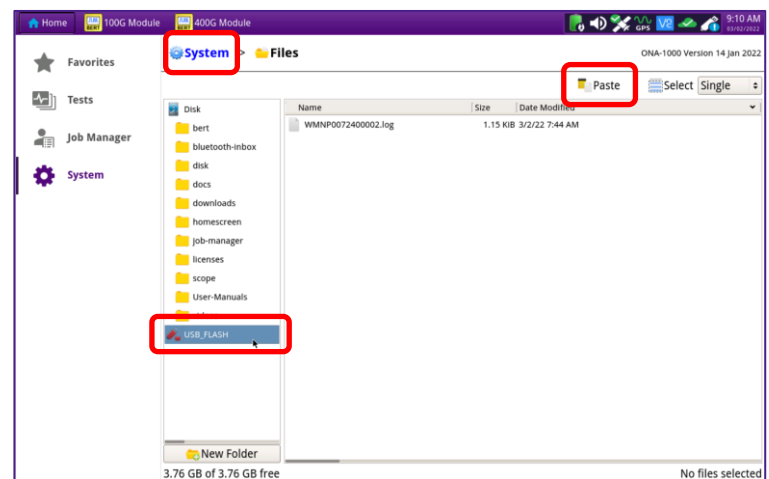


Figure 6: USB Flash Explorer

QUICK CARD

EJECT USB FLASH DRIVE

1. Tap the **Removable Storage** icon  to display the USB Flash Drive controls.

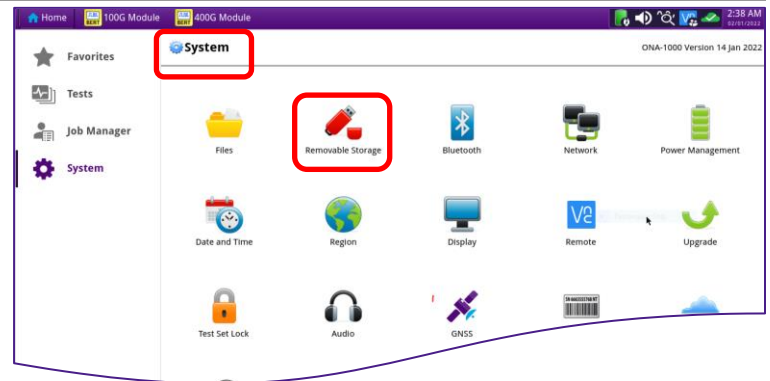



Figure 7: System Menu

1. Tap the **Eject** button. 
2. It is now safe to remove the USB flash drive from the OneAdvisor.

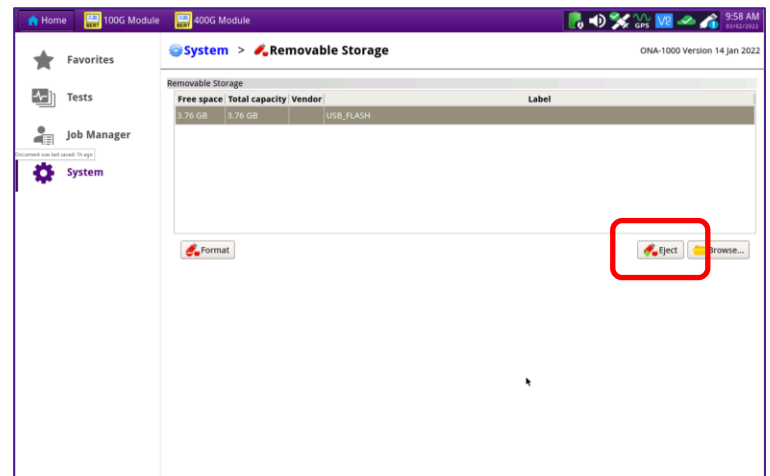


Figure 8: Removable Storage controls